

# Guida alle Misure



Misuriamo tutti i capi in Lunghezza dal collo all'orlo, larghezza torace, spalle e lunghezza manica.

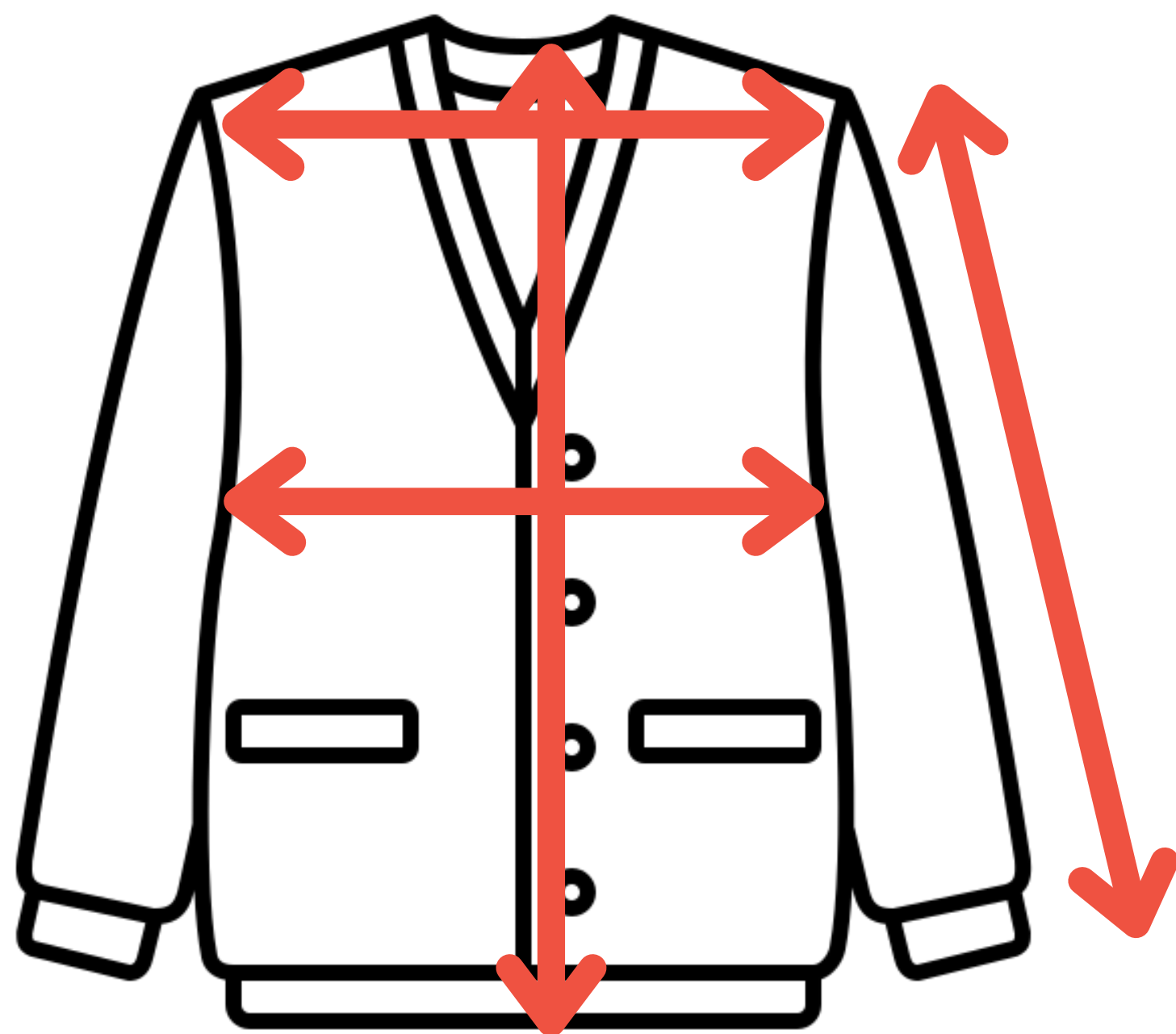
I Pantaloni vengono misurati in vita, lunghezza, larghezza gamba alta e larghezza gamba bassa.



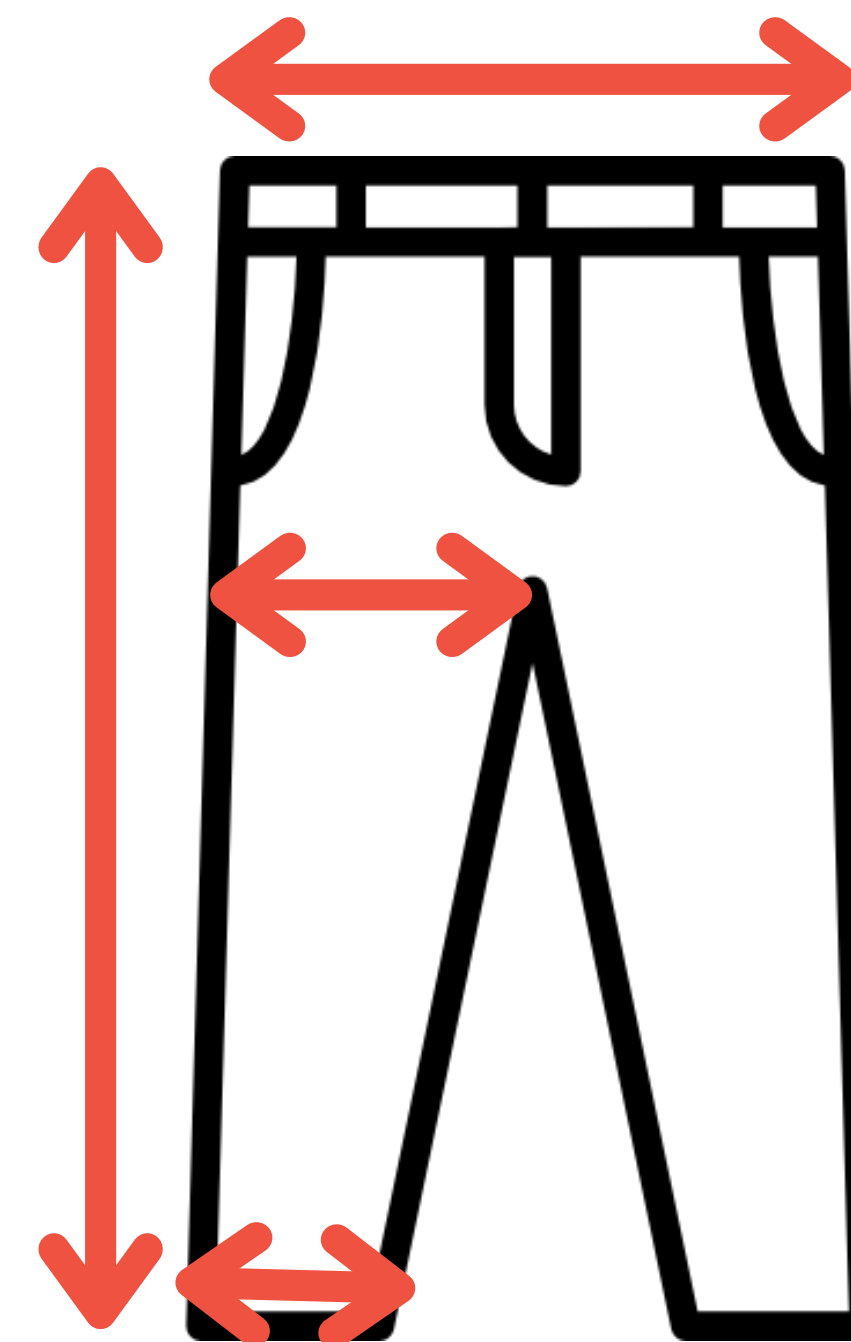
We measure all garments in Length from neck to hem, chest width, shoulders and sleeve length.

Trousers are measured in waist, length, high, leg width and low leg width.

T-Shirt-Shirt (Camicie) - Cappotti (Coat)-etc...



Pantaloni (Trousers)



Foulard

